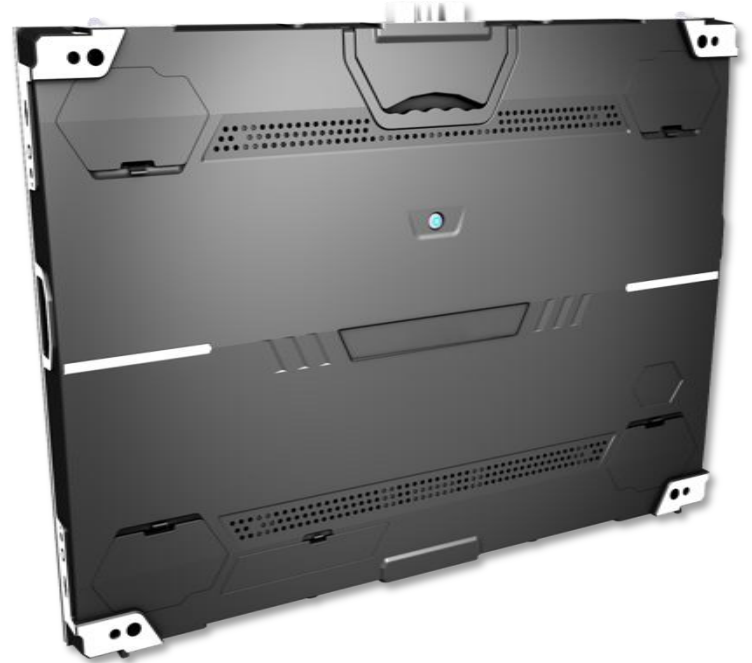


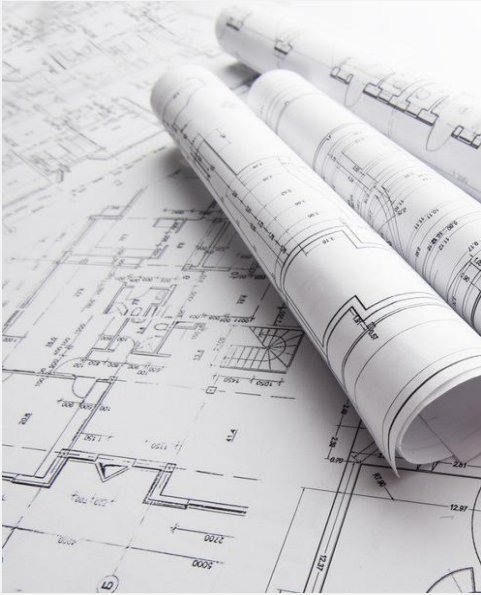


SM series

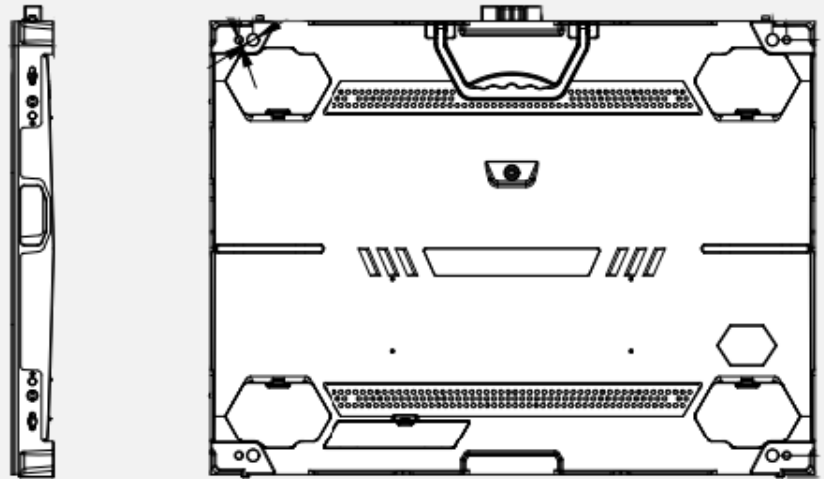
4K/8K INDOOR FULL COLOR LED PANEL

**THINK
OUTSIDE
THE
BOX**

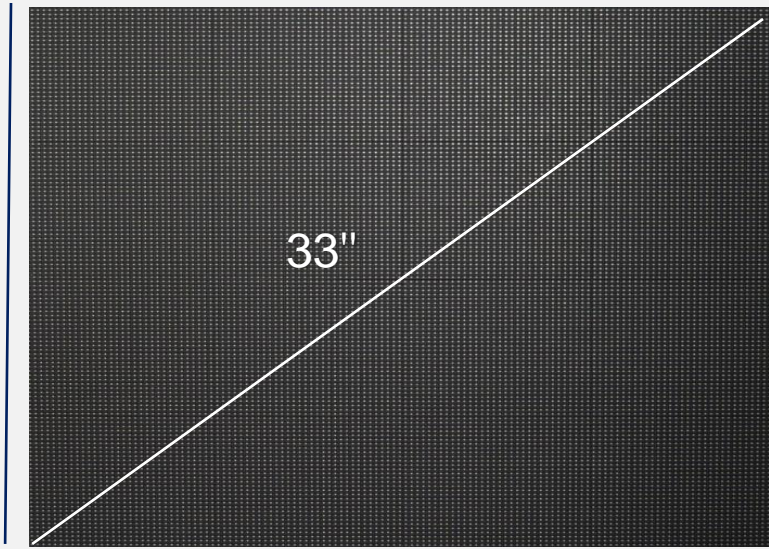




A LITTLE BIT OF HISTORY



480mm



Weight: 6.5KG

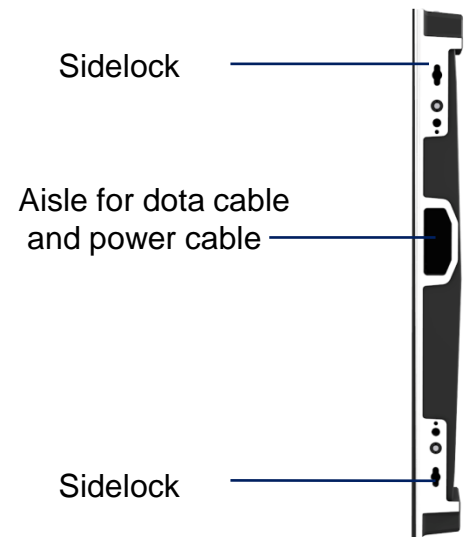
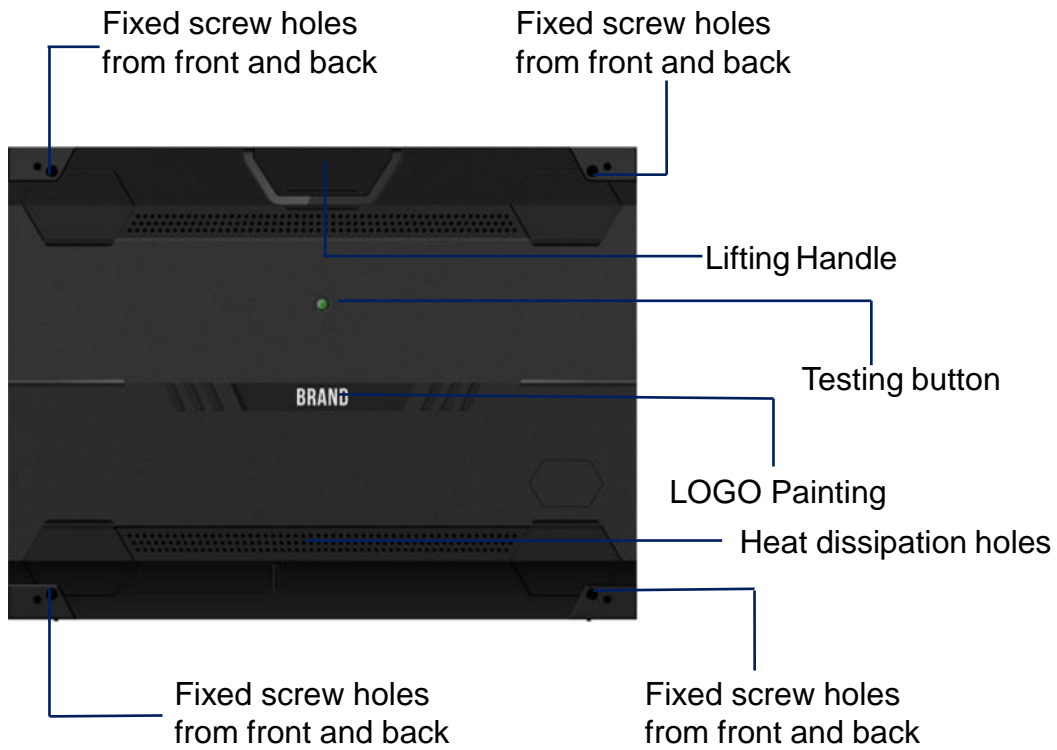


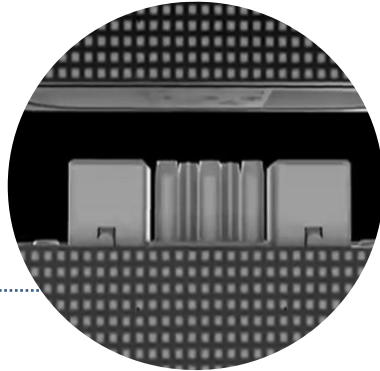
82mm

46mm

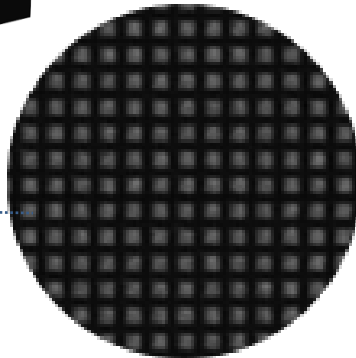
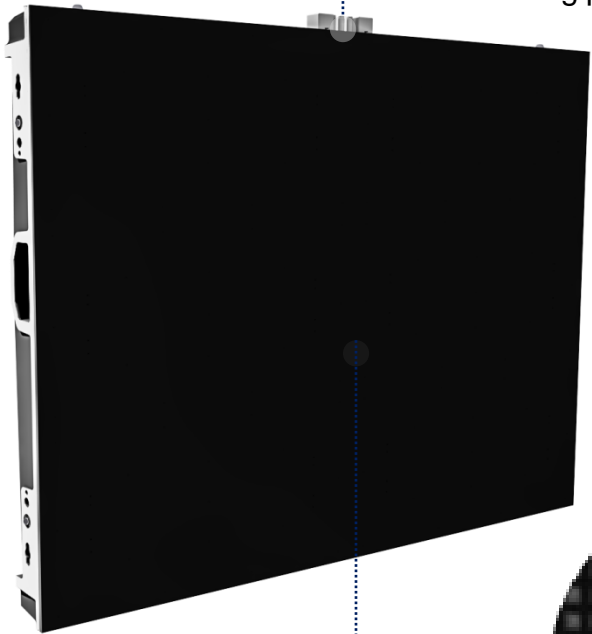


640mm





Locating pin for Precise docking



9000:1

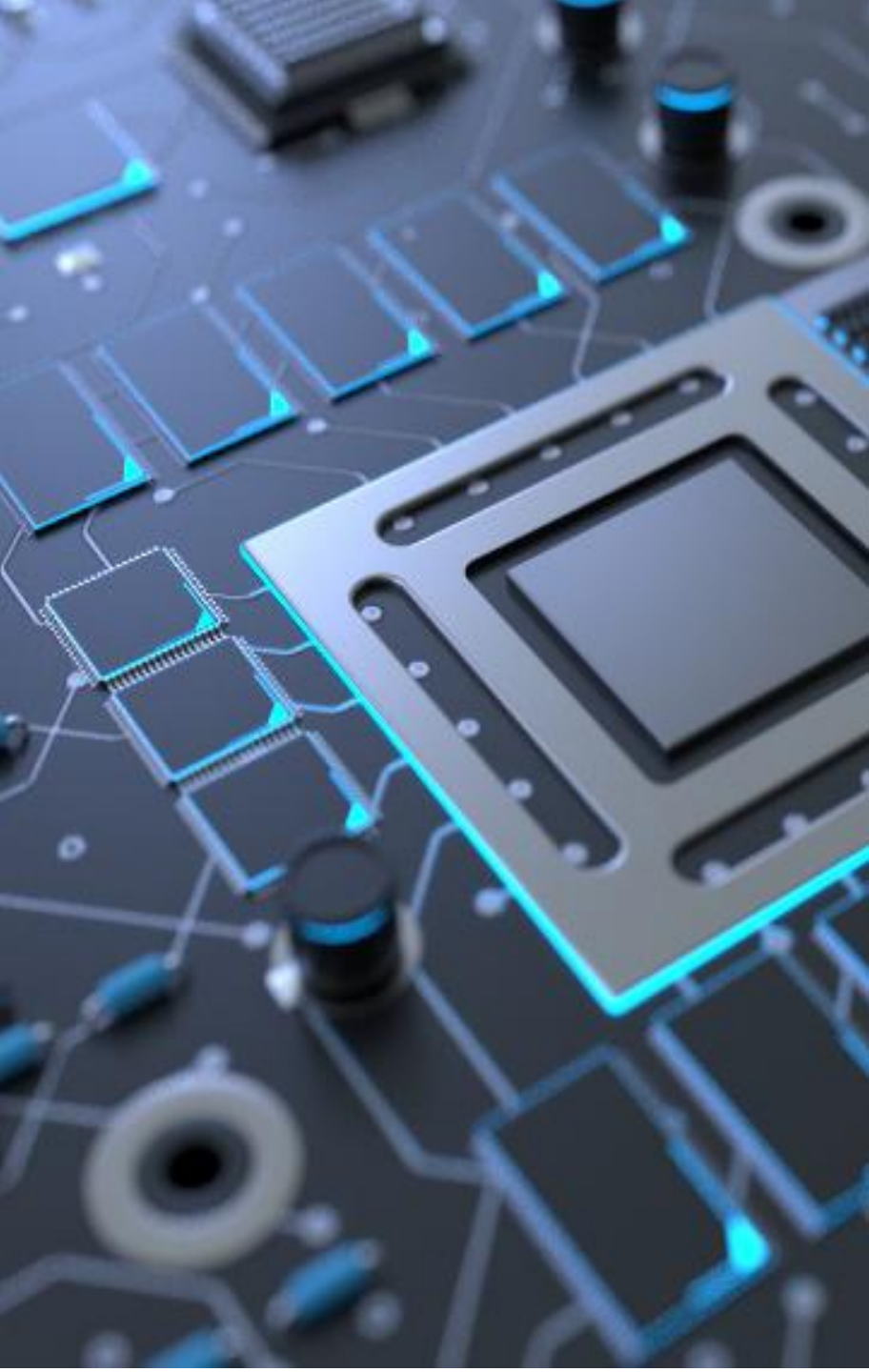
Pure back LED lamps with matte for High contrast

4:3 cabinet

9000:1 contrast

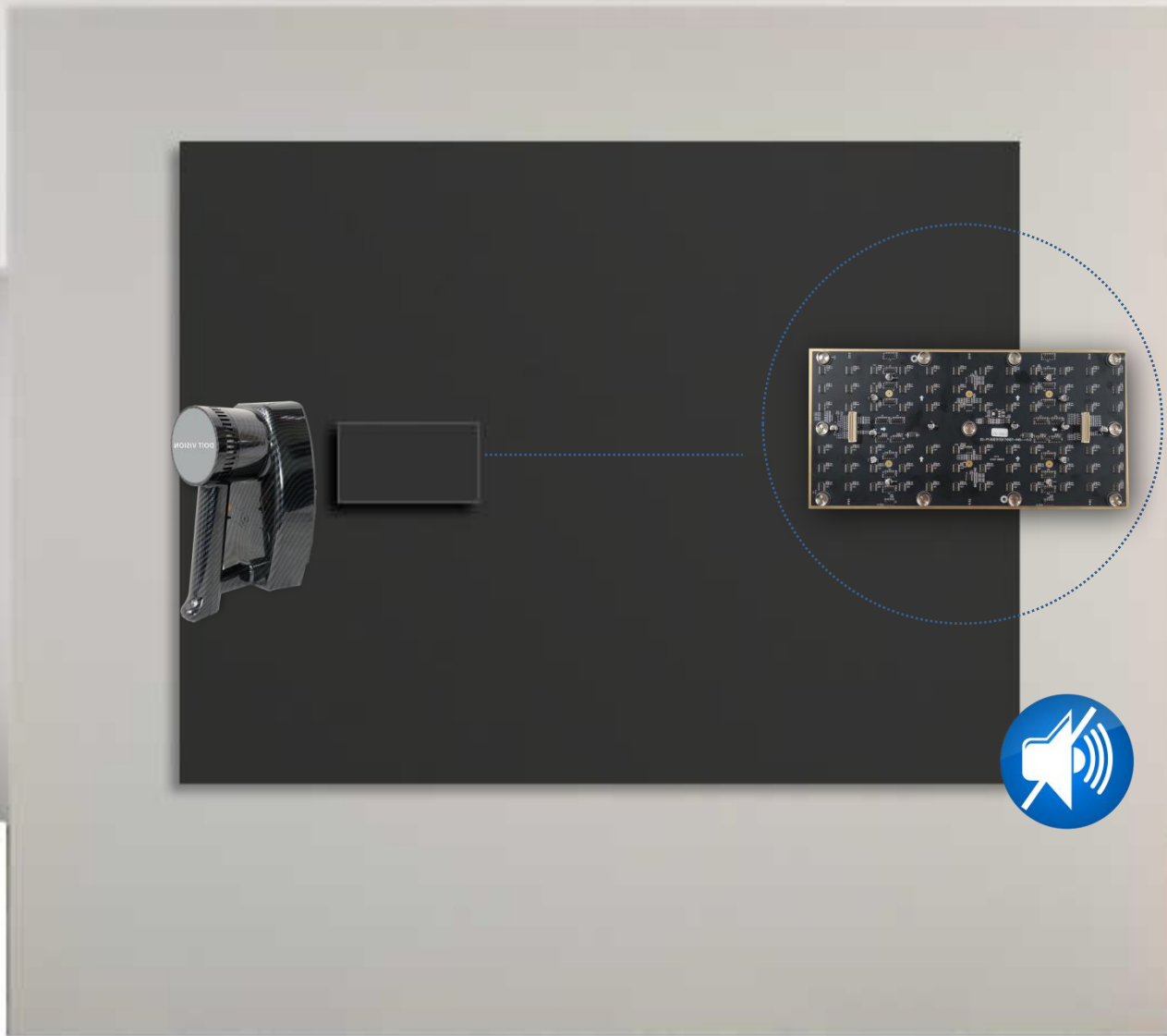
Auto brightness, colors calibration
Cable free connection

Nice looking housing



Calibration memo in LED module

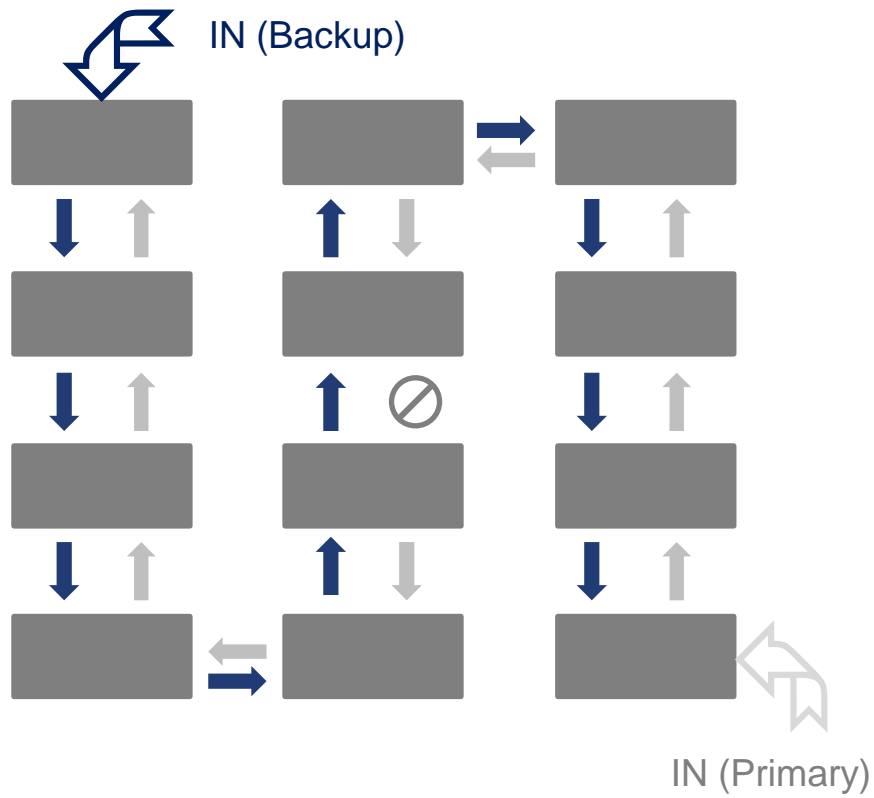
- Optimized PCB board design
- 4 layers PCB
- Calibration-memo in PCB board
- Perfect matched with Novastar control system
- Perfect heat release
- CE / EMC certified optional



Totally front maintenance without any structure
Noiseless design, keep silence during working

Support 2K / 4K / 8K





Dual Backup System
Power supply, signal cable backup
available



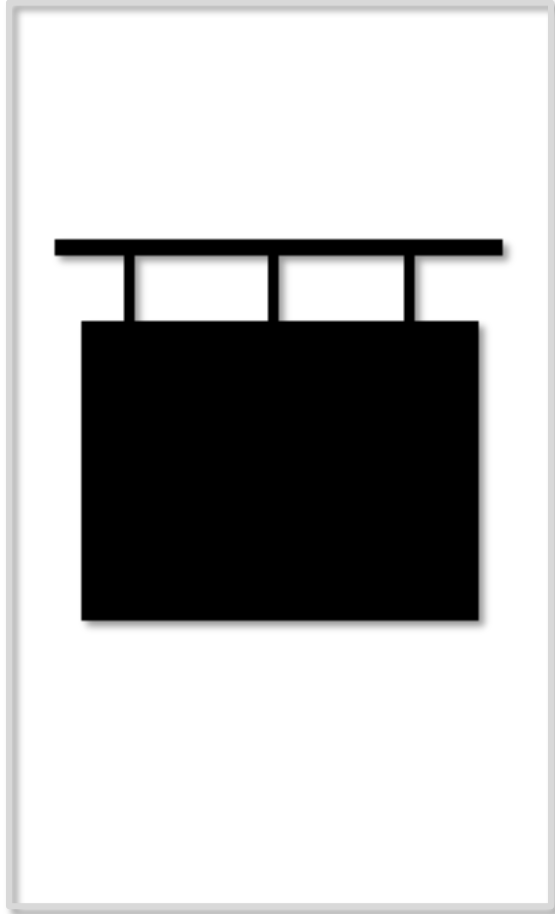
Customized for 90 degree



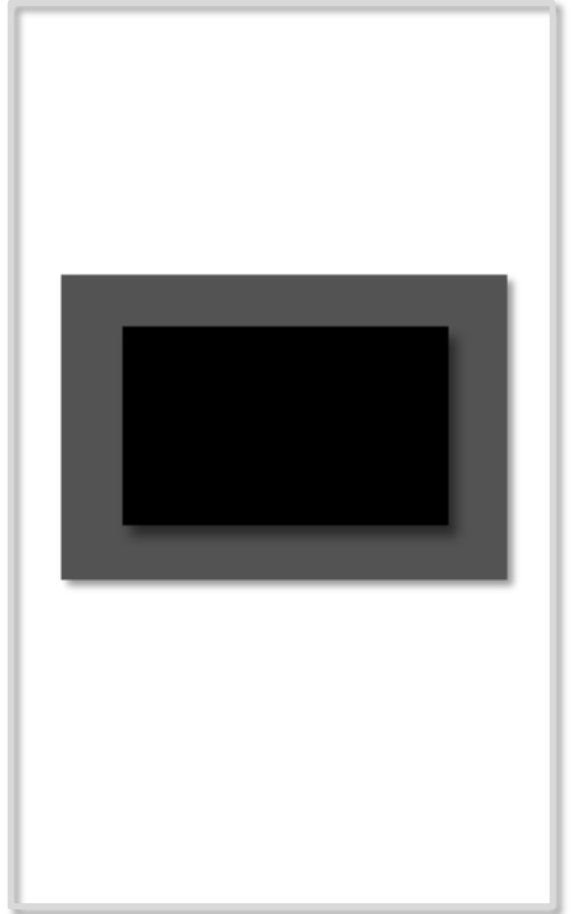
Available for inner curve



Freeding standing



Hanging



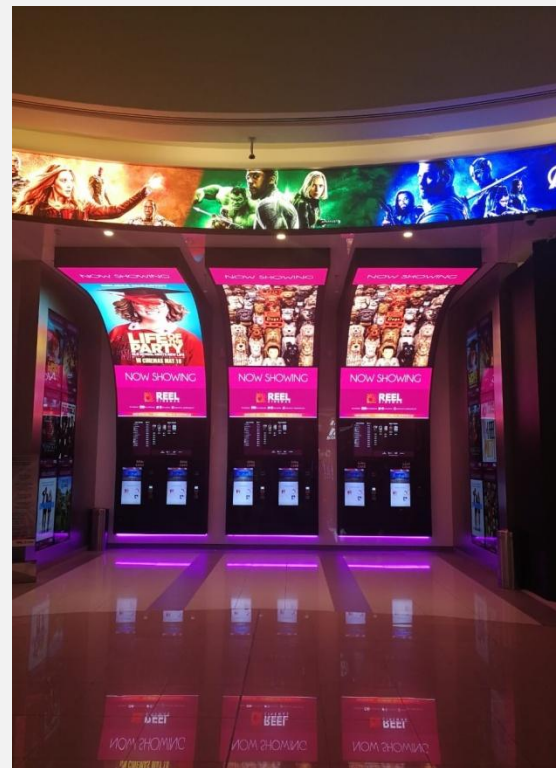
Wall-mounted



CCTV

Conference

ADVERTISING



PROJECT GALLERIES

Specification for indoor models

Pixel pitch	SM1.25mm	
LED configuration	SMD1010	
Brightness	800nits	
Viewing angle	160° / 160°	
Scan mode	1/64	
Refresh rate	3840Hz	
Processing	16 bits	
Module size	320mm x 160mm x 3mm (W x H x D)	12.6" x 6.3" x 0.1" (W x H x D)
Panel size	640mm x 480mm x 46mm (W x H x D)	25.2" x 18.9" x 1.8"(W x H x D)
Panel weight	7.5kg	
Input voltage	AC220V 50/60 HZ	
Power consumption (Avg)	200W/sqm	
Power consumption (Max)	640W/sqm	
Working temperature	-20°C~60°C	
IP rating	IP31/IP31	
Life span	100,000 hrs	
Warranty	24 months	

Specification for indoor models

Pixel pitch	SM1.56mm	
LED configuration	SMD1212	
Brightness	800nits	
Viewing angle	160°/ 160°	
Scan mode	1/51	
Refresh rate	3840Hz	
Processing	16 bits	
Module size	320mm x 160mm x 3mm (W x H x D)	12.6" x 6.3" x 0.1" (W x H x D)
Panel size	640mm x 480mm x 46mm (W x H x D)	25.2" x 18.9" x 1.8"(W x H x D)
Panel weight	7.5kg	
Input voltage	AC220V 50/60 HZ	
Power consumption (Avg)	200W/sqm	
Power consumption (Max)	640W/sqm	
Working temperature	-20°C~60°C	
IP rating	IP31/IP31	
Life span	100,000 hrs	
Warranty	24 months	

Specification for indoor models

Pixel pitch	SM1.83mm	
LED configuration	SMD1515	
Brightness	1000nits	
Viewing angle	160° / 160°	
Scan mode	1/44	
Refresh rate	3840Hz	
Processing	16 bits	
Module size	320mm x 160mm x 3mm (W x H x D)	12.6" x 6.3" x 0.1" (W x H x D)
Panel size	640mm x 480mm x 46mm (W x H x D)	25.2" x 18.9" x 1.8"(W x H x D)
Panel weight	7.5kg	
Input voltage	AC220V 50/60 HZ	
Power consumption (Avg)	200W/sqm	
Power consumption (Max)	640W/sqm	
Working temperature	-20°C~60°C	
IP rating	IP31/IP31	
Life span	100,000 hrs	
Warranty	24 months	